



signotec  
e-signature solutions

**SOFTWARE  
SOLUTIONS**

**signoPAD** *Api*

## **Documentation**

**Installation guide**

**signoPAD API**

Software components for communicating  
with signotec Sigma, Omega, Gamma and Alpha LCD pads

**Version: 1.8**

**Date: 17.05.2017**

© signotec GmbH

[www.signotec.de](http://www.signotec.de)

**Tel.:** +49 (0) 2102 53575 10

**E-mail:** [info@signotec.de](mailto:info@signotec.de)

**signotec**  
e-signature solutions

## Contents:

<b>1</b>	<b>INTRODUCTION</b>	<b>4</b>
<b>2</b>	<b>REQUIREMENTS</b>	<b>5</b>
<b>3</b>	<b>INSTALLATION</b>	<b>6</b>
3.1	STANDARD INSTALLATION	6
3.2	SILENT INSTALLATION	11
3.2.1	The features	11
3.2.2	Selecting and deselecting features	12
3.2.3	Update installation or initial installation with all features	12
3.2.4	Changing the installed features at a later time	13
3.3	SILENT DEINSTALLATION	13

### Legal notice

All rights reserved. This documentation and the components it describes are products copyrighted by signotec GmbH based in Ratingen, Germany. Reproduction of this documentation, in part or in whole, is subject to prior written approval from signotec GmbH. All hardware and software names used are trade names and/or trademarks of their respective manufacturers/owners. Subject to change without notice.

## Document history

Version	Date	Person responsible	Status/note
1.0	2010/01/14	Lars Triebsees	Documentation created
1.1	2010/01/15	Arne Brandes	Minor revisions
1.2	2010/01/20	Lars Triebsees	Version adjustments
	2011/07/11	Lars Triebsees	Last saved
1.3	2011/05/25	Lars Triebsees	Additions and modifications for the new version
1.4	2012/05/21	Lars Triebsees	Modifications system requirements
1.5.	2012/06/18	Lars Triebsees	Modifications for the new version
1.6	2012/08/07	Arne Brandes	Hint for new Win 8 versions added
1.7	2016/08/23	Lars Triebsees	GAMMA pad added
1.8	2017/05/17	Valentin Tkachev	Changes in 3.2.1

## 1 Introduction

For using the signotec pads SIGMA, OMEGA, GAMMA and ALPHA, signotec provides an API interface that allows programmers to create applications for their own personal use.

This API contains the following components:

- Pad driver
- Pad demo application with various sample source code
- Visual control/OCX based on ActiveX technology
- Win32DLL
- .NET class library
- signotec HID driver
- WinUSB driver

## 2 Requirements

The operating system must be Microsoft Windows XP SP3, or a later version of Windows.

This version was tested on the following Windows versions:

Windows XP with Service Pack 3  
Windows Vista  
Windows 7  
Windows 8.1  
Windows 10

Microsoft .NET Framework is required to run certain applications and example programs of this API. .NET Framework is not included in this installation; it can be obtained free of charge from Microsoft.

The following applications and example programs require .NET Framework Version 2.0:




- C# demo application
- VB.NET demo application

.NET Framework can also be installed after running this setup program. The absence of the .NET Framework does not affect this setup.

### 3 Installation

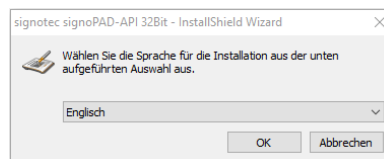
The setup program is provided as an EXE file. To run setup, you will require Microsoft Installer Version 2.0 (or higher).

The signoPAD API is available for 32-bit and 64-bit:

-  The 32-bit version contains components and applications that were compiled for the x86 platform only. But the setup and all the components and applications can also be used on 32-bit and 64-bit versions of Windows.
-  The 64-bit version contains components and applications that were compiled for the x64 platform only. Some demo applications are only compiled for 32-bit and are not included in this release. Both the setup and all the components and applications can only be used on 64-bit versions of Windows
-  Note: To install the software correctly, you will require administrator rights on the local system.

#### 3.1 Standard installation

After starting the installation program, for example, by double-clicking the EXE file, you select your preferred language for the installation.



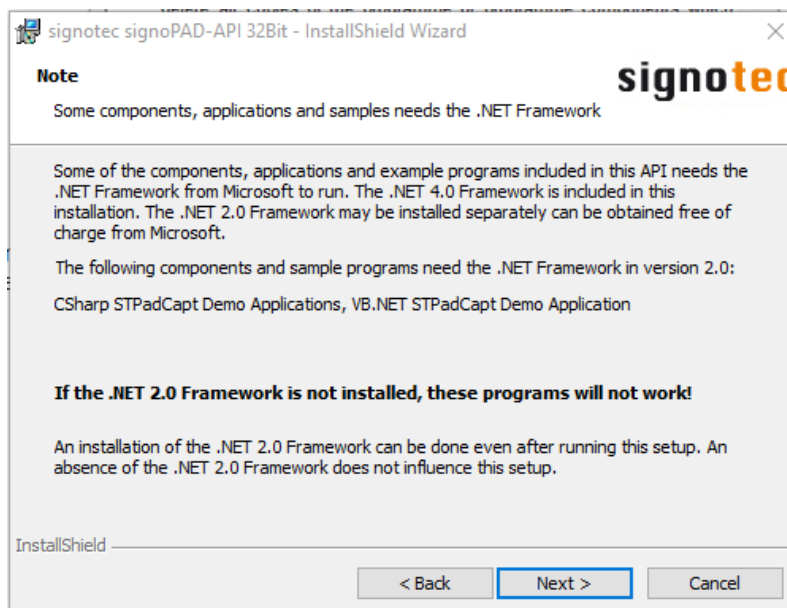
The welcome dialogue box of the Installation Wizard then appears. Click 'Next' to start the installation process.



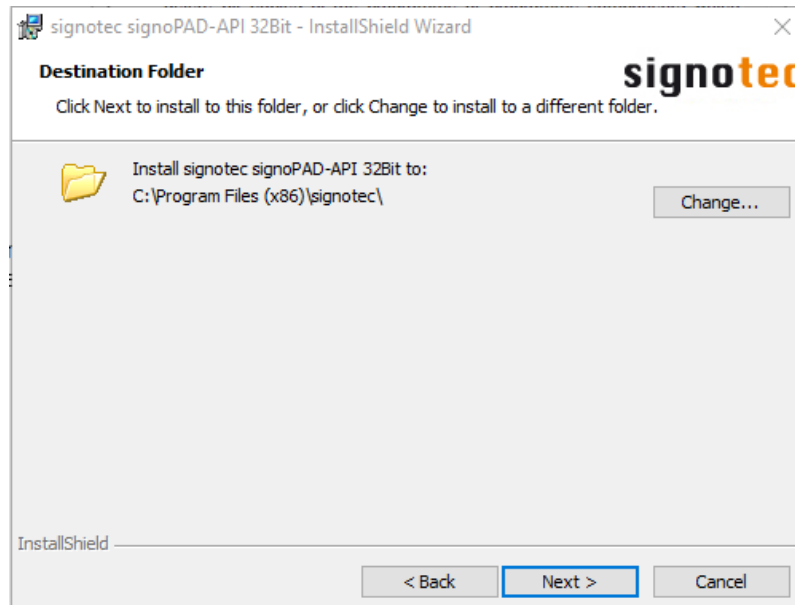
Please read the licence agreement carefully. You need to accept the terms of the licence agreement before you can continue with the installation. Once you have done this, click 'Next'.



The following window gives information about dependencies on particular versions of Microsoft .NET Framework.

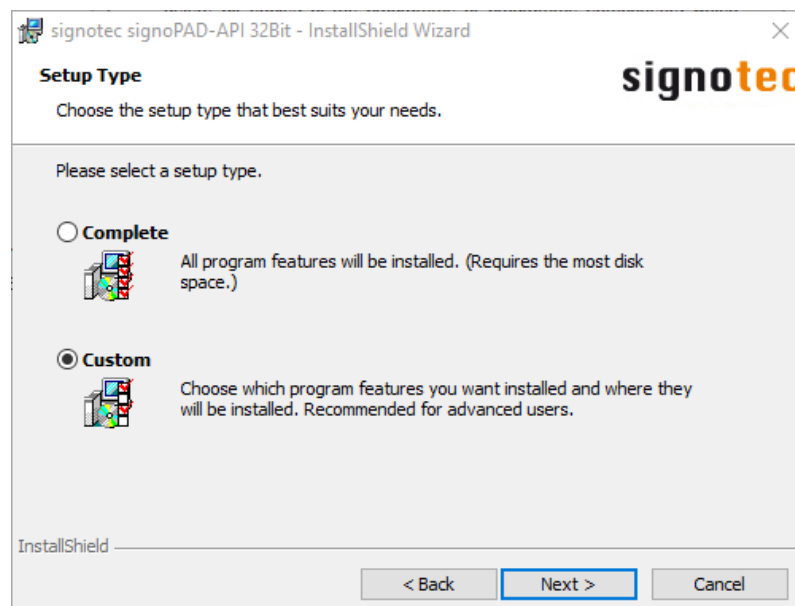


You can change the default destination path as required. The change is applied when you click 'Next'.



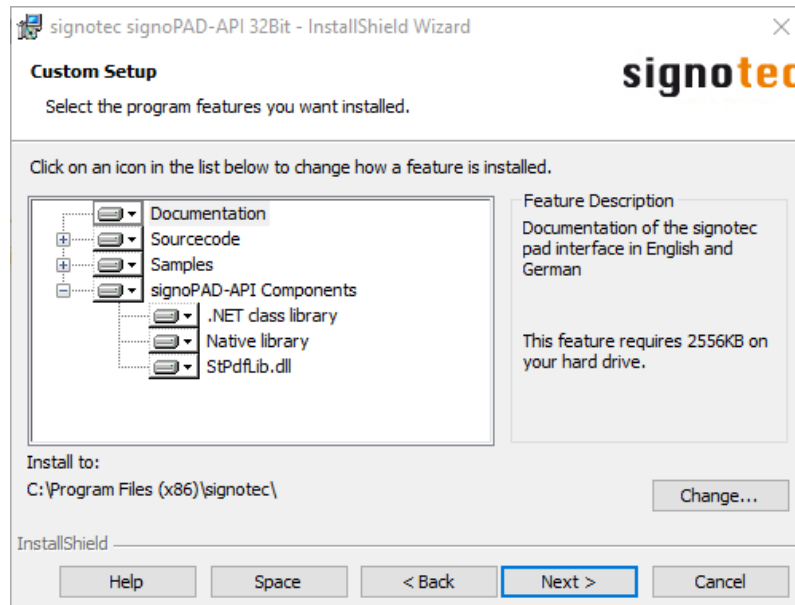
You can choose between two setup types: Full (standard setup) and Custom.

The Custom installation option allows you to select or deselect specific program components.



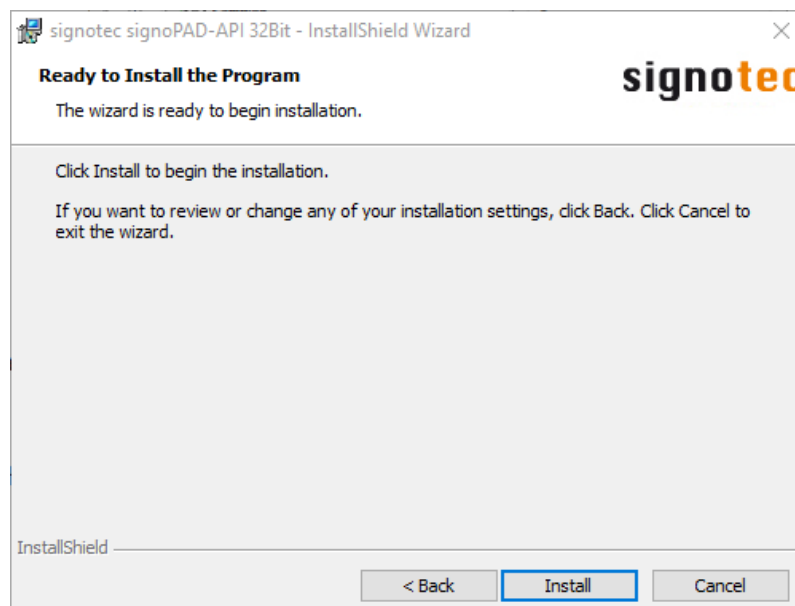


Selection dialogue box for Custom setup:

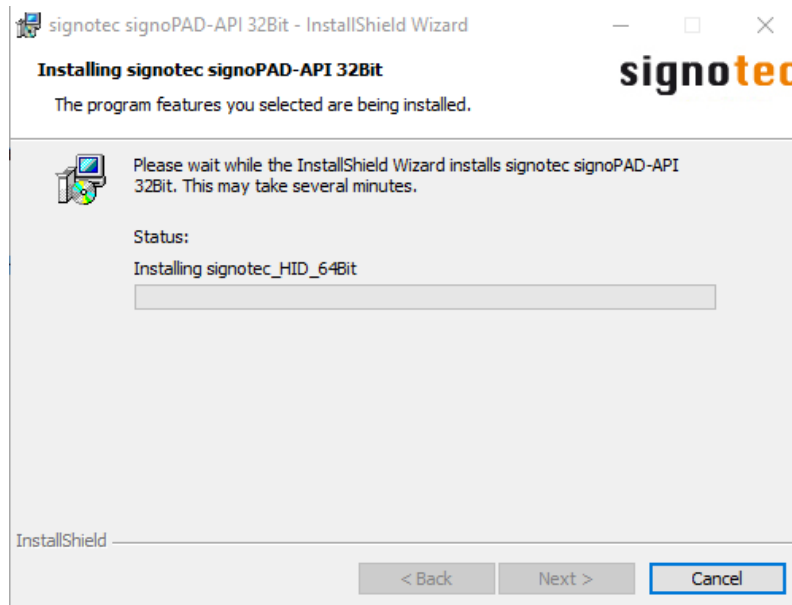


Exit the feature selection by clicking 'Next >'.

Now click the 'Install' button to begin installing.



The files are copied and the necessary installation settings are performed. Please be patient while this takes place.



The installation is now successfully completed. Click 'Finish' to exit the Installation Wizard.



Note: If User Account Control (UAC) is activated (Windows Vista and higher), you must confirm during installation (or uninstall) that you want to run the setup.

## 3.2 Silent installation

A silent installation makes it possible for you to install signoPad-API without displaying dialogue boxes, thus requiring no additional user interaction. To perform a silent installation, start the command prompt. Then switch to the folder containing the signoPAD-API setup. There, you can use various parameters to include a number of features during installation.

Note: With Windows Vista and newer versions of the OS, you must launch the command line as the administrator in order to perform a correct installation.

### 3.2.1 The features

The signoPAD-API setup consists of a range of features. These features include those that must always be installed (for example, the actual program files) and those that are optional. The optional features include:

- **signotecOtherDLLs**
- **Documentation**
- **SourceCode**
- **Samples**
- **NETClassLibrary**
- **Win32Library**
- **STPdfLib**

The **orange, bold terms** are the feature names used in the setup and are important in the next chapter.

**The feature names are case-sensitive.**

### 3.2.2 Selecting and deselecting features

There are two ways to specify the feature list for the initial installation or for an update installation.

#### Method 1

Method 1 is useful if only a few features need to be deselected. First, select the Windows installer parameter '**ADDLOCAL**' and the value '**ALL**' to select all features. Then select the '**REMOVE**' parameter and specify the names of the features that should not be installed.

Here are some examples for running with the command prompt:

```
signoPAD-API_XX.X.XX_32Bit.exe /s /v" ADDLOCAL=ALL REMOVE=Documentation, Samples /qn"
```

#### Method 2

Method 2 is useful if only a few optional features need to be installed. Here, use the '**ADDLOCAL**' parameter to pass only the list of optional features that should be installed.

Here are some examples for running with the command prompt:

```
signoPAD-API_XX.X.XX_32Bit.exe /s /v" ADDLOCAL=SourceCode, Documentation /qn"
```

### 3.2.3 Update installation or initial installation with all features

If you only want to update to a new version while retaining the current feature list, or perform an initial installation with all features, run the following commands:

```
signoPAD-API_XX.X.XX_32Bit.exe /s /v"/qn"
```

### 3.2.4 Changing the installed features at a later time

After successfully completing the installation, you can add or remove one or more optional features. To do this, restart the setup for the version that is already installed.

Here are some examples for running with the command prompt:

```
signoPAD-API_XX.X.XX_32Bit.exe /s /v"ADDLOCAL=Documentation  
REMOVE=SourceCode,Samples /qn"
```

### 3.3 Silent deinstallation

A silent deinstallation makes it possible for you to uninstall signoSign/2 without displaying dialogue boxes, thus requiring no additional user interaction. In order to carry out a silent deinstallation, start the command prompt. Then switch to the folder containing the signoSign/2 setup. Now use the following commands to uninstall signoSign/2:

```
signoPAD-API_XX.X.XX_32Bit.exe /s /x /v"/qn"
```