

User Manual



Contents

1. THANK YOU!	3
2. SYMBOLS	3
3. WARNINGS AND PRECAUTIONS	4
4. OTHER RESOURCES	4
5. CHECKING THE DEVICE UPON ARRIVAL	5
6. PRODUCT VIEW	6
6.1. FRONT SIDE	6
6.2. BACK SIDE	7
6.3. VESA MOUNTING FIXTURE	8
6.4. USB CABLE	8
7. CONNECTION TYPES	8
7.1. USE WITH A COMPUTER	8
7.2. USB REDIRECTION ON THE TERMINAL SERVER	9
7.3. VIRTUAL SERIAL CONNECTION AT THE TERMINAL SERVER	9
7.4. SPECIAL FEATURES OF CITRIX ENVIRONMENTS	10
7.5. CONNECTING OVER THE NETWORK	10
7.6. USING A USB-TO-ETHERNET ADAPTER	10
8. INSTALLATION	10
8.1. ASSEMBLING THE PEN HOLDER	11
8.2. FOLDING OUT/IN THE SUPPORT	11
8.3. AUTOMATICALLY DETECTING THE CONNECTION TYPE	11
8.4. OPERATION WITH DHCP	12
8.5. INSERTING THE USB CABLE	13
8.6. POWER SUPPLY VIA USB	13
8.7. POWER SUPPLY VIA POWER-OVER-ETHERNET (PoE)	13
8.8. USING AN EXTERNAL POWER SUPPLY UNIT	13
8.9. STATUS LED	13
8.10. SOFTWARE	14
9. ACCESSING THE SERVICE MENU	14
9.1. SWITCHING MODES	14
9.2. SETTING THE IP ADDRESS	14
9.3. ADJUSTING THE BRIGHTNESS	14
9.4. RECALIBRATING THE SENSOR	15
10. MAINTENANCE, CARE AND CLEANING	15
10.1. PEN AND PEN CARTRIDGE	15
10.2. REPLACING THE CARTRIDGE	16
10.3. REPLACING THE PEN	16
10.4. CARE AND CLEANING	16
11. WARRANTY	16
11.1. DURATION AND NATURE OF THE WARRANTY	16
11.2. EXCUSION OF WARRANTY	17
12. SUPPORT AND REPAIRS	17
12.1. TECHNICAL SUPPORT	17
12.2. REPAIRS	17
12.3. OVERVIEW OF ACCESSORIES AND SPARE PARTS	18
13. DISPOSAL OF DEVICE	18
14. DECLARATIONS OF CONFORMITY	18

1. Thank you!

Thank you for having chosen one of signotec's products. You now have a robust, durable and high-tech solution that is unrivalled in this market segment. The signotec Delta LCD signature pad serves as an input device for signatures and is used to capture writing characteristics (biometrics) accurately and in a high resolution and to display textual and colour graphical information on the LCD. The LCD visualises the signature on the pad in real time.

The signotec Delta signature pad is a true signature pad and not a mere monitor extension, in contrast to other 10-inch devices on the market. The device has the same SDK as all other signotec signature pads and is also integrated in the applications.

The design of the sensor, along with a hardened glass surface, enables a long service life of up to 30 million signatures and unbeatable robustness.

2. Symbols

Special attention in this user manual is drawn to specific situations, important notes and general information using a system of symbols and colours.



Caution: Situations that can lead to injuries, errors or damage.



Note: Situations in which attention should be given to specific notes and information on compatibility.



Tip: Notes and tips for usage.

3. Warnings and precautions

This user manual contains detailed information about the installation and setup of the signotec signature pad. The following sections describe the device itself, as well as how to install, configure and properly maintain the device.



Please read this user manual carefully **before installing and using** the device to ensure that you handle it safely.

Before you start using the device, please read all information, warnings and safety instructions carefully to take full advantage of the product's long service life. Failure to comply with these precautions will result in the loss of your warranty. Furthermore, signotec will not accept any responsibility for the repair or replacement of the device.

- The signature pad was primarily designed for use in an office environment, over the counter or for mobile use and has been tested in this operating environment. The use of the device in other fields of application may damage it and is undertaken entirely at the user's own risk.
- The pad is neither waterproof nor explosion-proof. In addition, you should avoid extreme fluctuations in temperature. Never use the device in very dusty environments.
- Make sure to not scratch the display or place sharp or heavy objects on the device. Avoid violently shaking (from impacts or drops, for example) the device in order to prevent damage to the components.
- The screen's surface can become damaged by pen tips that are pointy or have sharp edges. Replace the pen tip or cartridge once it shows signs of use.
- Never expose the product to high-voltage electrostatic discharges or the build-up of electrostatic charge on the LCD screen. It could cause the LCD screen to temporarily become patchy. If patches do appear, leave the device's display turned on. The patchiness will disappear after a few hours.
- The signature pad and the supplied pen are designed to be used together. You will void the warranty if you use these two components of the product separately.
- In case of damage to the LCD screen, DO NOT touch the liquid that may leak out under ANY CIRCUMSTANCES. This liquid may cause skin irritation. Immediately rinse the affected area under running water for at least 15 minutes if the liquid comes in contact with your skin, eyes or mouth. If the liquid comes in contact with your eyes or mouth, consult a doctor as well.

4. Other resources

In addition to the user manual, signotec also provides further information such as product descriptions and technical data sheets online. For additional downloads and information, please contact your dealer or visit www.signotec.com.

5. Checking the device upon arrival

Immediately upon or after receiving the product, check that all associated components have been delivered. If a component is missing, defective or visibly damaged, please contact signotec or the authorised dealer from whom you purchased the product within one working day. If you do not complain about a missing, defective or visibly damaged component within the period of time from receipt of the product, the product is considered to have been properly accepted and it remains at the sole discretion of the dealer to deliver or replace missing, defective or damaged components after this period. It is up to you (as the customer) to prove the non-conformity of the delivery upon receipt of the product.

The scope of delivery for your signature pad includes:

- signotec Delta signature pad
- Battery-free pen with replaceable cartridge (*attached to the pad by a cord*)
- USB Y-cable
- Replacement cartridge and tool
- Vertical pen holder



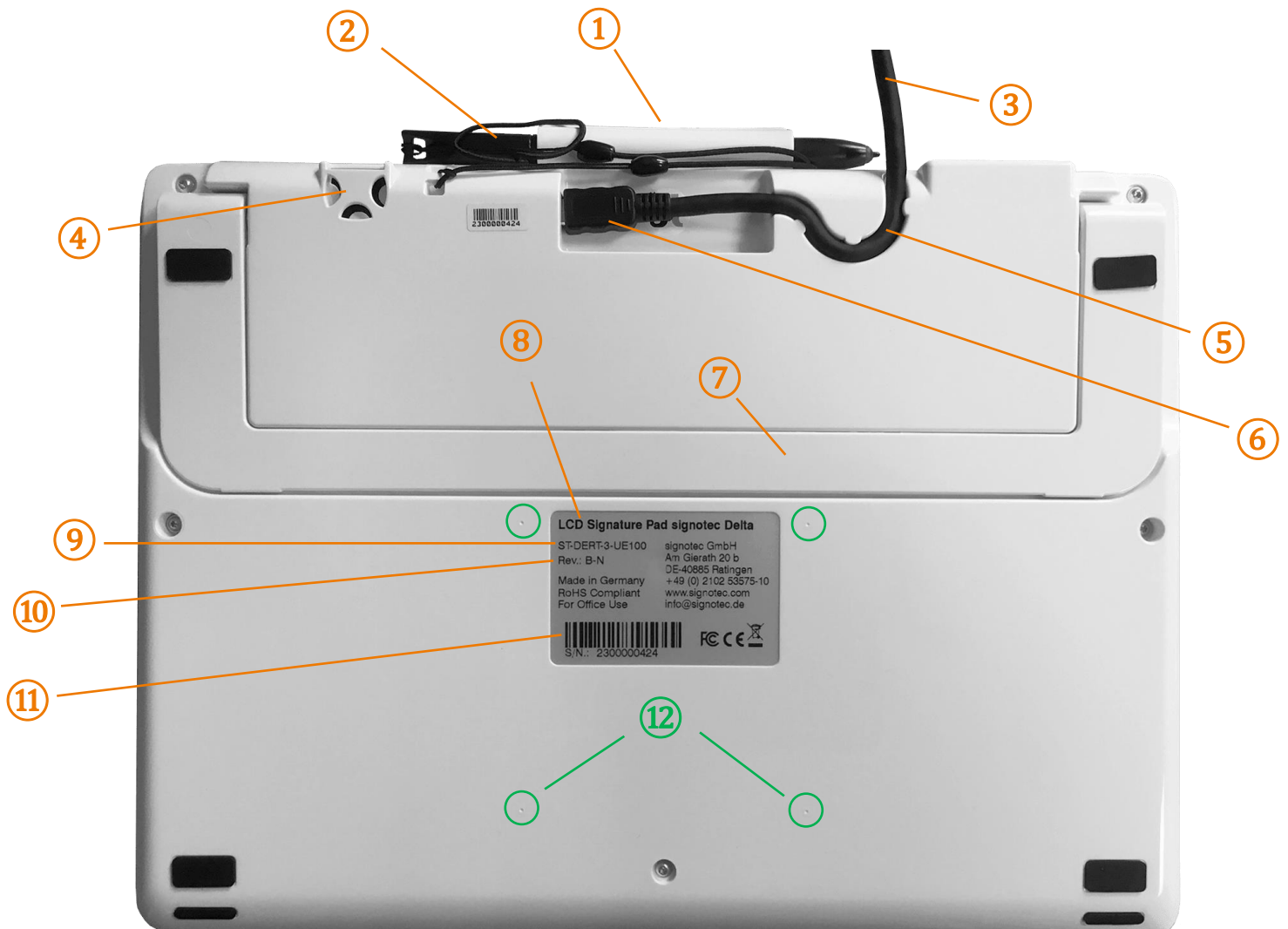
6. Product view

6.1. Front side



1	USB cable	4	Ergonomic pen with replaceable pen tip
2	Liquid Crystal Display (LCD) with a hardened glass surface	5	Cord (attached to the device and pen)
3	Status LED		

6.2. Back side



1	Pen holder (horizontal)	7	Foldout support
2	Pen with cord (attached to the device and pen)	8	Device designation
3	USB cable	9	Item number
4	Mounting fixture for a vertical pen holder	10	Hardware revision number
5	Tension relief for USB cable	11	Barcode with unique serial number
6	Micro-USB port	12	VESA mounting fixture (75 × 75 mm)

6.3. VESA mounting fixture

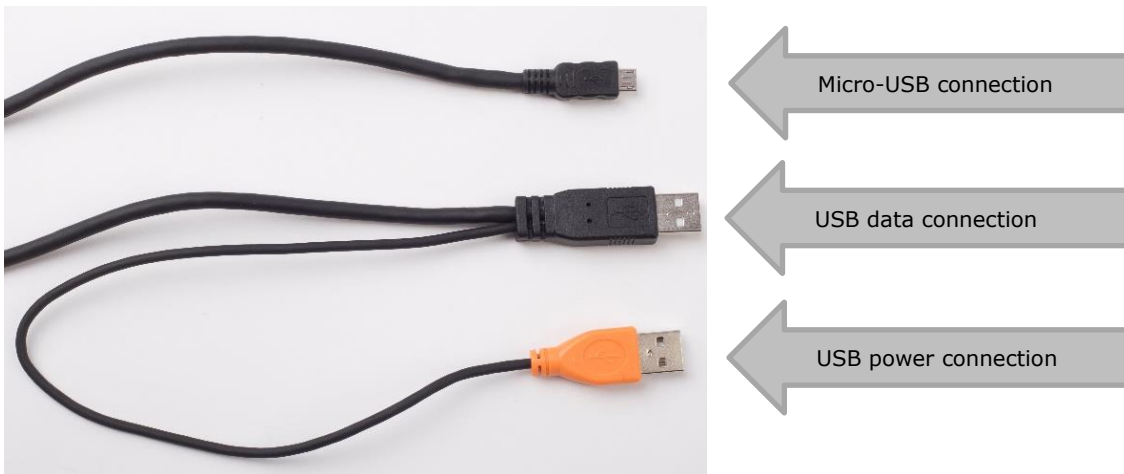
There are markings for a 75 × 75 mm VESA mounting fixture on the back of the signature pad. Thermo plastic screws (such as the Ejoy or Schriever brand) with a diameter of 3 mm and a maximum penetration depth of 6.5 mm must be used for mounting.



If you use incorrect mounting accessories, it can result in damage to the housing and the electronics.

6.4. USB cable

The supplied USB Y-cable has three different plugs. The Micro-USB plug is connected to the device. The black plug provides power and data transfer and the orange plug provides an additional power supply. Please refer to the ['Inserting the USB cable'](#) section for more information.



7. Connection types

The signotec Delta signature pad is available in two different connection types. The device features an HID/WinUSB connection and an optional Ethernet connection (RJ45). The Ethernet connection can optionally be compatible with Power-over-Ethernet (PoE), meaning that no external power supply is required in a corresponding system environment.

There is no variant with an integrated USB-to-serial converter (FTDI), in contrast to the other signotec pads, as the performance of this interface would not be sufficient for such a large display.

7.1. Use with a computer

We recommend using a signature pad in HID-USB or WinUSB mode for use on a computer with a local operating system. If you operate the device under Windows 8.1, we recommend installing the signotec HID driver. This driver disables the (Windows) power saving feature for the signotec signature pads, which can have a negative effect on the device and could turn off the device from time to time, for example. The driver is automatically installed with all current signotec software products. As an alternative, you can download it at www.signotec.com.

7.2. USB redirection on the terminal server

The signotec signature pads feature support for native USB redirection from Windows Remote Desktop and Citrix.

a) Remote Desktop

The following steps are required to use this feature on a Windows Terminal Server with RDP (Remote Desktop):

- a. The Windows Terminal Server must have Remote Desktop Session Host (RDSH) installed in the server roles in Remote Desktop Services (RDS).
- b. At the client, the following group policy must be enabled: *Computer Configuration > Administrative Templates > Windows Components > Remote Desktop Services > Remote Desktop Connection Client > RemoteFX USB Device Redirection*, and enable the 'Allow RDP redirection of other supported RemoteFX USB devices from this computer' option.
- c. To apply the settings, an update of the machine's policies ('gpudate /force') and then a reboot must be performed.
- d. When establishing the remote connection, enable 'Other supported RemoteFX USB devices' in the RDP client's options under 'Local Resources' under 'More...'.
e. An additional icon should be displayed in the connection line of the remote session after a successful connection to show the available and redirected devices.

b) Citrix

The local devices can be selected for redirection when using current Citrix versions, for example, via Citrix Receiver. These can also be accessed on the Citrix desktop via the 'Devices' area and can be enabled or disabled.



Note: The connection via USB redirection is supported; however, it offers only an insufficient or very slow connection speed in some system environments. We recommend using virtual serial or Ethernet connections if the connection speed is slow.

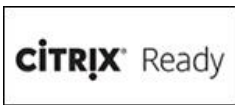
7.3. Virtual serial connection at the terminal server

Signature pads can be used via a serial interface in a Windows Terminal Server or Citrix environment.

The signotec Delta signature pad cannot be equipped with an integrated USB-to-serial converter, in contrast to the smaller signotec signature pads.

However, the 'signotec virtual COM port driver', which must be purchased separately, is available for them. This driver is available for Windows and Linux operating systems and converts the connected USB device into a virtual COM port.

7.4. Special features of Citrix environments



There is an alternative connection method for signotec signature pads in Citrix environments. The Virtual Channel technology enables you to use signature pads without needing the COM port to map on the server. The technology is also not limited to the use of vCOM devices, but also supports native HID and WinUSB devices. In addition, the Virtual Channel connection offers significantly better performance and stability and is therefore the recommended connection type for compatible Citrix environments.



Note: The signotec Virtual Channel driver is required on the client. The driver is available ex-works for various systems (such as IGEL and Rangee clients). If this is not the case, the driver must be purchased.

7.5. Connecting over the network



As an option, the signotec Delta can be shipped with an Ethernet connection (RJ45). This connection can be used to operate the device using an IP address in a network. The connection type and IP address can be changed in the service menu at any time.



Note: The device cannot be retrofitted with the Ethernet connection. For this reason, if you plan to integrate the device into the network at some point in time, we recommend purchasing the device with an Ethernet connection.

7.6. Using a USB-to-Ethernet adapter

The signotec Delta is not compatible with the signotec USB-to-Ethernet adapter. To operate the device over a network, you need to purchase it with an integrated Ethernet connection.

8. Installation



Please install all **required drivers** on your system **before** connecting the device. Most drivers are included when installing signotec APIs and other software products (such as signoSign/2). Otherwise, you can find them at www.signotec.com.

The device has a removeable USB Y-cable with two standard USB Type A plugs and one Micro-USB plug. The cable is generally used for data transfer and to power the device. Connect this plug to a free USB port of the computer. The device can also be operated without a USB connection if it has an integrated Ethernet connection.

The cable is routed through a small channel on the back of the signature pad to provide tension relief. Attaching the cable without tension relief may damage the cable as well as the device. Please refer to the '[Inserting the USB cable](#)' section for more information.

Please connect the cable while taking all necessary safety precautions with regard to other devices and persons. The cable should be routed in such a way that under no circumstances is it constantly under tension. Do not place heavy objects on the cable, do not bend the cable repeatedly and do not exert strong pressure on the cable connections. Improper loading of the cable or the connector sockets may result in cable breakage or damage to the device's components or your computer. Damage that can be attributed to these causes is not covered by warranty.



Note: Please use only the supplied cable or appropriate spare parts from signotec to ensure correct functionality. The USB standard provides for a maximum cable length of three metres. signotec cannot guarantee functionality for longer cables.

8.1. Assembling the pen holder

There is a small cutout on the back of the device to attach the supplied, vertical pen holder. The rounded, flat end of the pen holder needs to be pressed into this cutout, while applying a little pressure, in order to ensure that it stays in place.



8.2. Folding out/in the support

The signotec Delta features a foldout support on the back of the device. It can be easily folded out to raise the device up at an angle. In this manner, the device can be conveniently adapted to the conditions wherever it is in use. The person signing the pad can read the contents easily and sign comfortably.



When folding out the support, pay attention that it is folded out completely to ensure a stable support.

8.3. Automatically detecting the connection type

The device is preconfigured for USB mode ex-works. For this reason, the signotec Delta will automatically search for the connection type when the device is turned on for the first time. It is based on the cable you use when installing the device.

The following are typical application scenarios:

1. If the black USB plug is connected to a host (computer) first, the USB mode remains enabled.
2. If an Ethernet cable with 'Power-over-Ethernet' (PoE) is connected first, the device automatically enables the network mode.
3. If the black plug is connected to a USB power supply first:
 - a. a device featuring an integrated Ethernet connection enables the network mode.
 - b. a device without an integrated Ethernet connection enables the USB mode.



Note: Many USB power supply units are detected as a host. In this case, it is necessary, when operating over a network, to change the connection type manually in the service menu.

- If the orange USB plug is connected to a host (computer) or power supply first, the USB mode remains enabled.



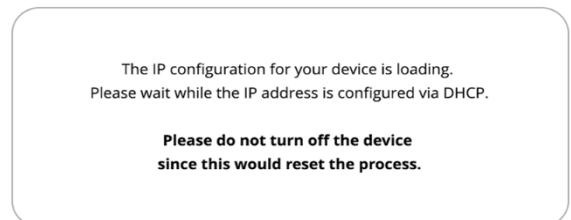
Remember to always insert the Ethernet or the black USB cable before you use the orange cable.

8.4. Operation with DHCP

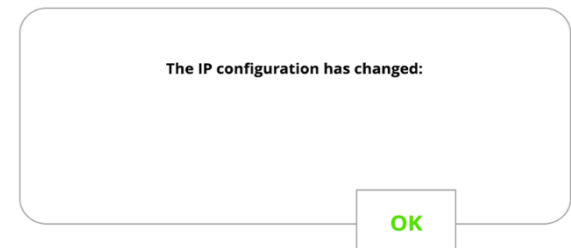
The signotec Delta signature pad with integrated Ethernet connection supports the automatic assignment of an IP address via DHCP from firmware 1.42 (June 2020). The use of DHCP is enabled ex-works, meaning that the device immediately attempts to retrieve an IP address when the network mode is detected or enabled (see also [Automatically detecting the connection type](#) or [Connecting over the network](#)). The use of DHCP can be enabled or disabled in the service menu at any time.

While the IP address is being retrieved, the device displays the message shown on the screen.

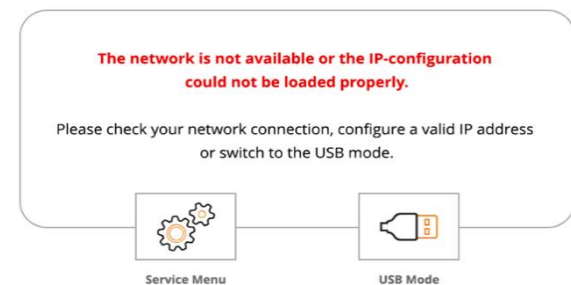
i **Note:** The timeout for retrieving the IP address is 60 seconds by default.



If the IP address was successfully assigned, it will be shown on the display and must be confirmed. This also serves to inform about a new IP address if it should have changed. The last assigned IP address can also be called up in the service menu.



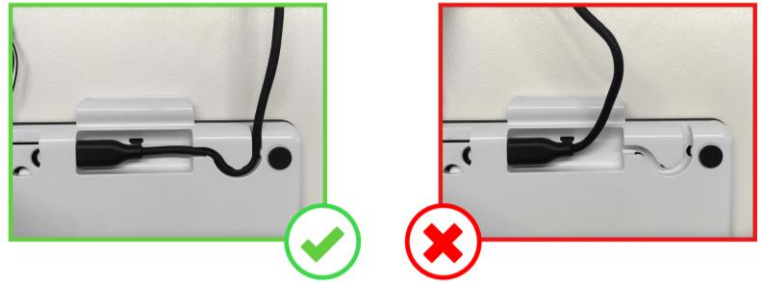
If the IP address fails to be retrieved, you can switch directly to USB mode or the service menu to make your own settings.



i **Note:** Using the Spanning Tree Protocol (STP) in the underlying network can negatively affect the speed of the DHCP configuration. The signature pad has no influence on this.

8.5. Inserting the USB cable

The USB cable is part of the scope of delivery and it is easily connected to the device. First you insert the Micro-USB plug into the port on the back of the device and route the cable through the tension relief. Then, you connect both USB Type A plugs to a computer.



Improper plugging in/out of the USB cable, or doing so too often, can cause damage to the cable and Micro-USB plug. The warranty does not cover this type of damage.

8.6. Power supply via USB

The signotec Delta signature pad features a USB Y-cable. The cable has two plugs in order to provide the device with sufficient power (1,000 mA max.). One USB 2.0 plug provides an output of 500 mA in accordance with USB specifications. One USB 3.0 plug provides an output of 900 mA.

Often it is sufficient to connect the device only using the black plug for systems with USB 3.0 ports. However, for systems with USB 2.0 ports, you need to use both plugs in order to provide sufficient power to the device.

If the device is not provided with sufficient power, it can mean that it will not turn on, that it may turn off sporadically or that it will not react to the pen input.

8.7. Power supply via Power-over-Ethernet (PoE)

The signotec Delta signature pad can be shipped with an integrated Ethernet connection and support for Power-over-Ethernet (PoE). If the basic IT infrastructure for Power-over-Ethernet is available, then the device can be supplied with power using the Ethernet cable. This option supports the three common standards: PoE, PoE+ and 4PPoE (also called 802.3af-2003, 802.3at-2009 and 802.3bt-2018). If using this option, you do not need to use a power supply unit.

8.8. Using an external power supply unit

Some systems do not provide the necessary 500 mA (USB 2.0) or 900 mA (USB 3.0/3.1) on each port as per USB specification. If the device does not receive sufficient power, it will not turn on or it may sporadically turn off. You will need to use an optional power supply unit to provide a reliable source of power.

It is connected to a power outlet. The orange plug of the supplied USB-Y cable is inserted on the other side and connected to the device.



Depending on the connection type, the black cable is connected to the free USB port on the computer or an Ethernet cable is attached to the signotec Delta signature pad, which would mean that the USB connection to the computer is not necessary.

8.9. Status LED

There is a two-colour status LED on the front of the signature pad:

Orange light	The device is in standby or display mode.
Green light	The device is in capture mode and can capture a signature.



Note: These specifications correspond to the standard behaviour of the LED. You can use the API to individually control the LED, which means it may display a different behaviour. Please contact your software manufacturer in this case.

8.10. Software

The installation of drivers alone does not indicate that all device functions will be enabled. To use the signature pad, you also need software that provides communication with the device. You can use the signotec standard software products if you do not have software that supports the signotec signature pad. Please refer to www.signotec.com for an overview of signotec products.



Tip: We recommend using the signoSign/2 software for a legally compliant and legally admissible signature for PDF documents.

9. Accessing the service menu

Disconnect the pad from the power supply to access the service menu of the unit. Touch the **upper right corner** of the display with the pen. While holding the pen, reconnect the pad to the power supply. After rebooting, the LED lights up orange and the service menu is launched. You can navigate the menu using the supplied pen.



Tip: As an alternative, you can also access the service menu with API methods or the signoSign/2 application software.



9.1. Switching modes

You can change the operating mode in the service menu for signotec Delta signature pads featuring an integrated Ethernet connection. When you install the device, it attempts to automatically detect the operating mode, which means you do not need to do so manually. Please refer to the [‘Automatically detecting the connection type’](#) section for more information.

9.2. Setting the IP address

You can store the IP address for the device under ‘IP configuration’ in the service menu. To do so, tap one of the white field and then enter the address using the numbers that appear. Confirm your settings using the green checkmark and reboot the device.

9.3. Adjusting the brightness

The brightness of the display is adjusted via the service menu. Tap the desired setting with the pen (either ‘darker’ or ‘lighter’). After you have adjusted the brightness you can accept the settings by tapping the green checkmark. The pad will then reboot.

9.4. Recalibrating the sensor

You can recalibrate the sensor if the signature is not situated exactly under the tip of the pen.



Tip: The devices are pre-calibrated by signotec ex-works. It is only necessary to recalibrate the sensor in extraordinary circumstances or in the event of an error.



Disconnect the pad from the power supply. Touch the **upper left corner** of the display with the pen. While holding the pen, reconnect the pad to the power supply.

As an alternative, you can also recalibrate the device with API methods or the signoSign/2 application software.



After rebooting, the LED lights up orange. Two intersecting lines (like a plus sign) will appear on a white background in the upper left corner of the display.

Use the pen to tap the midpoint of the two intersecting lines.



Afterward, the same symbol appears in the lower right corner. Tap the two intersecting lines again.

Recalibration is now successfully completed. The pad reboots.

10. Maintenance, care and cleaning

signotec signature pads are maintenance-free. No technical components need to be replaced regularly or depending on use. You should handle the device with care, maintain it regularly and replace accessories promptly if they show signs of use in order to increase the device's service life as much as possible.

10.1. Pen and pen cartridge

The signotec pads are equipped with a robust and maintenance-free pen that does not require batteries. The pen's realistic size and soft cartridge makes the user feel like they are writing on paper. The pen can be attached to the pen holder. The pen is pre-attached to the device with a high-quality cord preventing it becoming lost.



10.2. Replacing the cartridge

Use the supplied tool to remove the cartridge from the pen if it needs to be replaced. You can then conveniently insert a new cartridge. Pay attention that you insert the correct end of the cartridge.

10.3. Replacing the pen

It takes only a few steps to replace the pen. The cord is attached to the device and pen by means of a simple loop. First enlarge the loop on the device and then feed the pen through. The cord can then be pulled through the loop on the pen to release the pen from the cord. Proceed in reverse order to attach a new pen or cord.



Caution: Improper replacement of parts and use of accessories from unauthorised sources may result in damage that is not covered by warranty.

10.4. Care and cleaning

Clean your device regularly. Dust and dirt particles can form residues on the sensor film or glass and pen, which can cause excessive wear to the surface. Regular cleaning of the surface and the pen will help to extend the device's service life. Normal wear and tear of the surface or the pen does not constitute a warranty claim.

To clean the device, only use very mild and diluted cleaning products; otherwise, the device may be damaged. Use a dry or damp soft cloth to clean the pen. Never use thinning agents, benzine, alcohol or other solvents for cleaning. Use an antistatic cloth or a dry or damp soft cloth to clean the glass of the device. Only apply gentle pressure to the surfaces of the device and make sure that no moisture forms on the surface or gets into any joints that may be present.

Any damage that is or has been caused, for example, by using the wrong cleaning agent and/or during cleaning, is not covered by warranty.

11. Warranty

Within the warranty period, signotec GmbH will repair free of charge all defects of the product that are caused by processing errors or material defects. It is at the discretion of signotec to repair or replace individual parts or the entire product. The replacement can mean new or repaired parts or a new or repaired product. Repaired parts or products must correspond to a new product in terms of functionality. The repaired parts or products only receive the remaining term of the original warranty period. The replaced or defective parts become the property of signotec.

11.1. Duration and nature of the warranty

- a) You receive a two-year carry-in warranty from the date of purchase with the purchase of a signotec device. The date printed on the invoice is decisive in this regard. The warranty period applies to the first customer and is non-transferable (in the event of resale).
- b) It is a carry-in warranty. An advance replacement is not part of this warranty and must be agreed separately on request. The costs and related risks of transport are not assumed by signotec.
- c) When purchasing the product, it is possible to purchase an extension of the warranty period up to five years. This option is a one-off offer when ordering the product. It is not possible to subsequently extend the warranty.

11.2. Excursion of warranty

Excluded from the warranty are (not an exhaustive list):

- a) Regular maintenance and repair or replacement of wear parts such as pen, cartridge or sensor surface;
- b) Compatibility issues resulting from hardware, software or configurations of the technical system environment;
- c) Damage or defects resulting from changes, adjustments or other modifications to the original product that were not authorised by signotec;
- d) Improper use, including but not limited to:
 - Damage or defects caused by failure to observe the care instructions, such as use of the wrong cleaning agent;
 - Damage or defects caused by use, operation or handling of the product that does not correspond to the intended purpose or location for application;
 - Damage or defects caused by incorrect or improper installation of the product;
 - Use of accessories, additional devices or other products that are not approved by signotec;
 - Repairs and repair attempts by persons not authorised by signotec.

12. Support and repairs

The products and solutions from signotec were designed to make our customers satisfied users. If, contrary to expectations, problems occur, you can find the necessary help and support on our FAQ and support pages.

12.1. Technical support

Please always describe the error with as much detail as possible (including a description of the work process, date of the first occurrence of the error, any changes made to the affected workstation, etc.) when contacting our support team. We must be able to reproduce the error in order to correct it. Therefore, please also describe exactly how the error can be reproduced. Please use the [ticket form](#) on our website in order to initiate a support request.

12.2. Repairs

In case of a defective signature pad or missing/defective parts, please use the appropriate [RMA form](#) on our website to send the device in for repair. In addition, our technology team is available at rma@signotec.de to answer all questions regarding repairs and spare parts.



Tip: A repair is often possible outside the warranty claim and offers a cheap and ecological alternative to a new purchase.

12.3. Overview of accessories and spare parts

The following table provides you with an overview of the available and supported accessories and spare parts.

Accessories and spare parts	
Pen without cord	ST-SPARE-PENERT-001
Replacement cartridges (3 pc., including tool)	ST-SPARE-PENTIP-CLMP
Replacement cord	ST-SPARE-CORD-003
Pen holder (vertical)	ST-SPARE-GAMDE-001
USB Y-cable (approx. 2.7 metres)	ST-SPARE-DEL-002
USB power supply unit	ST-SPARE-DEL-019

13. Disposal of device

The proper disposal of old electrical and electronic equipment ('waste equipment') is important to us.

All consumers and proprietors are legally obliged to dispose of old electrical and electronic equipment separately from household waste, as it contains harmful substances as well as valuable resources. Electrical appliances are marked with the adjacent symbol, which means that they must not be disposed of with normal household waste.



Old electrical equipment can be turned in at an approved collection or return point. For example, this can be a local recycling centre. Old electrical equipment is usually accepted there free of charge and recycled in an environmentally friendly and resource-saving manner.

Pursuant to the German Electrical and Electronic Equipment Act (*ElektroG*), our WEEE registration number is: DE 41995888.

14. Declarations of conformity

The signotec pads comply with the current RoHS Directive of the European Union.

The signotec pads were tested to be compliant with the following standards:

- EN 60950-1/11.2006 (Information technology equipment – Electrical safety)
- EN 61000-6-1 (Electromagnetic compatibility (EMC) – Immunity)
- EN 61000-6-3 (Electromagnetic compatibility (EMC) – Emission standard)
- EN 55022 (Electromagnetic compatibility – Emissions)
- EN 55024 (Electromagnetic compatibility – Immunity)
- CE marking
- Federal Communications Commission (FCC)



Copyright

Copyright © 2000–2020 signotec GmbH

All rights reserved. This document and the components it describes are products copyrighted by signotec GmbH, based in Ratingen, Germany. Reproduction of this documentation, in part or in whole, is subject to prior written approval from signotec GmbH. All hardware and software names used are trade names and/or trademarks of their respective manufacturers/owners. Subject to change at any time without notice. We assume no liability for any errors that may appear in this documentation.