



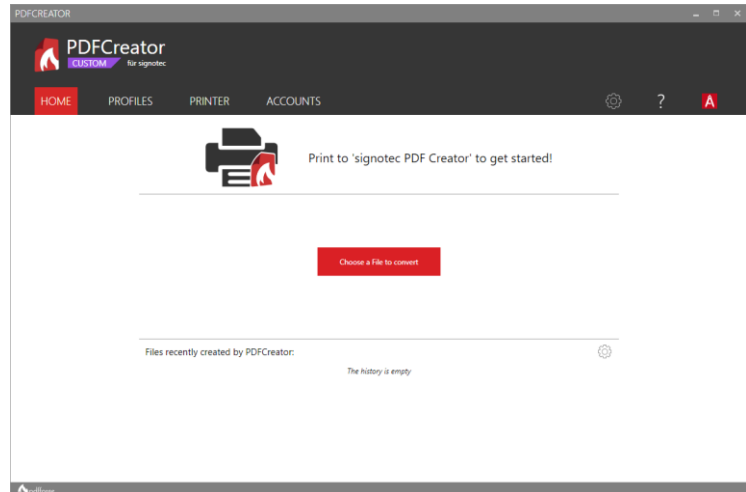
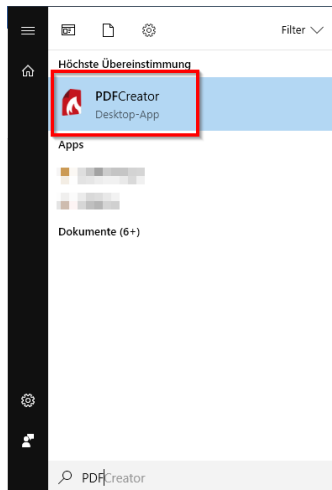
# INSTRUCTIONS

signotec PDF-Creator  
Create profile manually

for pdfforge PDFCreator v3

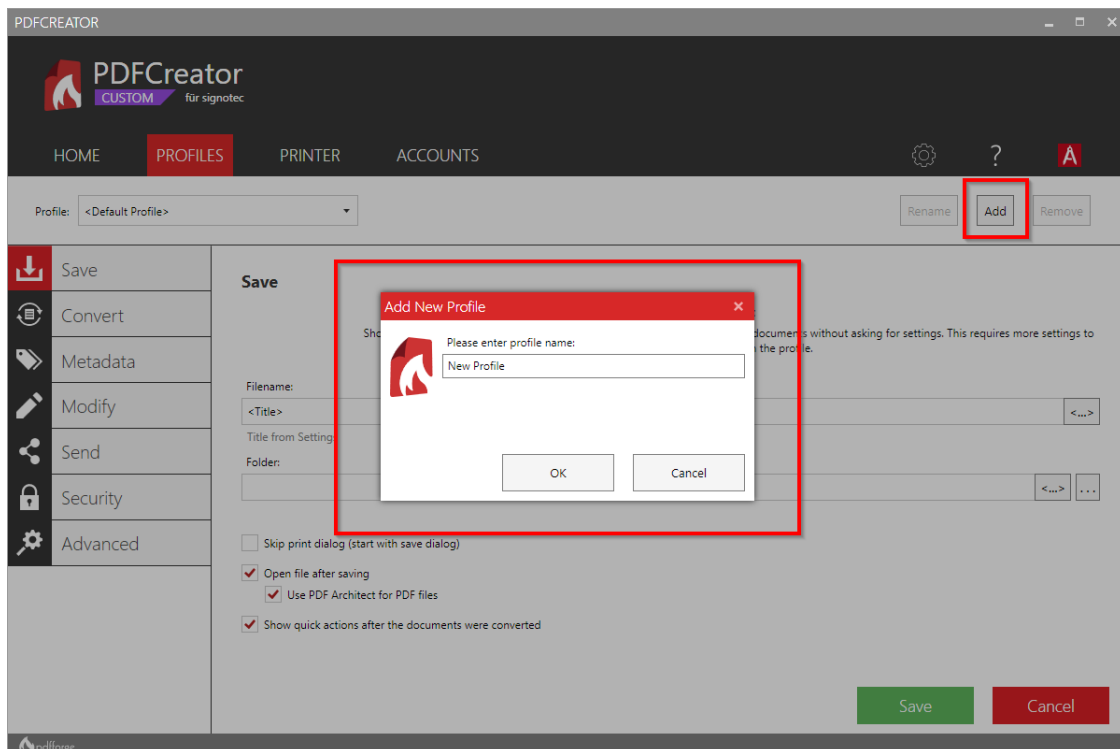
## 1) Start PDF-Creator

Start the „**PDFCreator.exe**“ via the Windows start menu or via the installation path.  
Example: "C:\Program Files\PDFCreator\PDFCreator.exe"



## 2) Create Profile

Switch to the tab „**Profiles**“. If there is no profile „**signotec**“, you can create it via the button „**Add**“.



### 3) Configure Profile

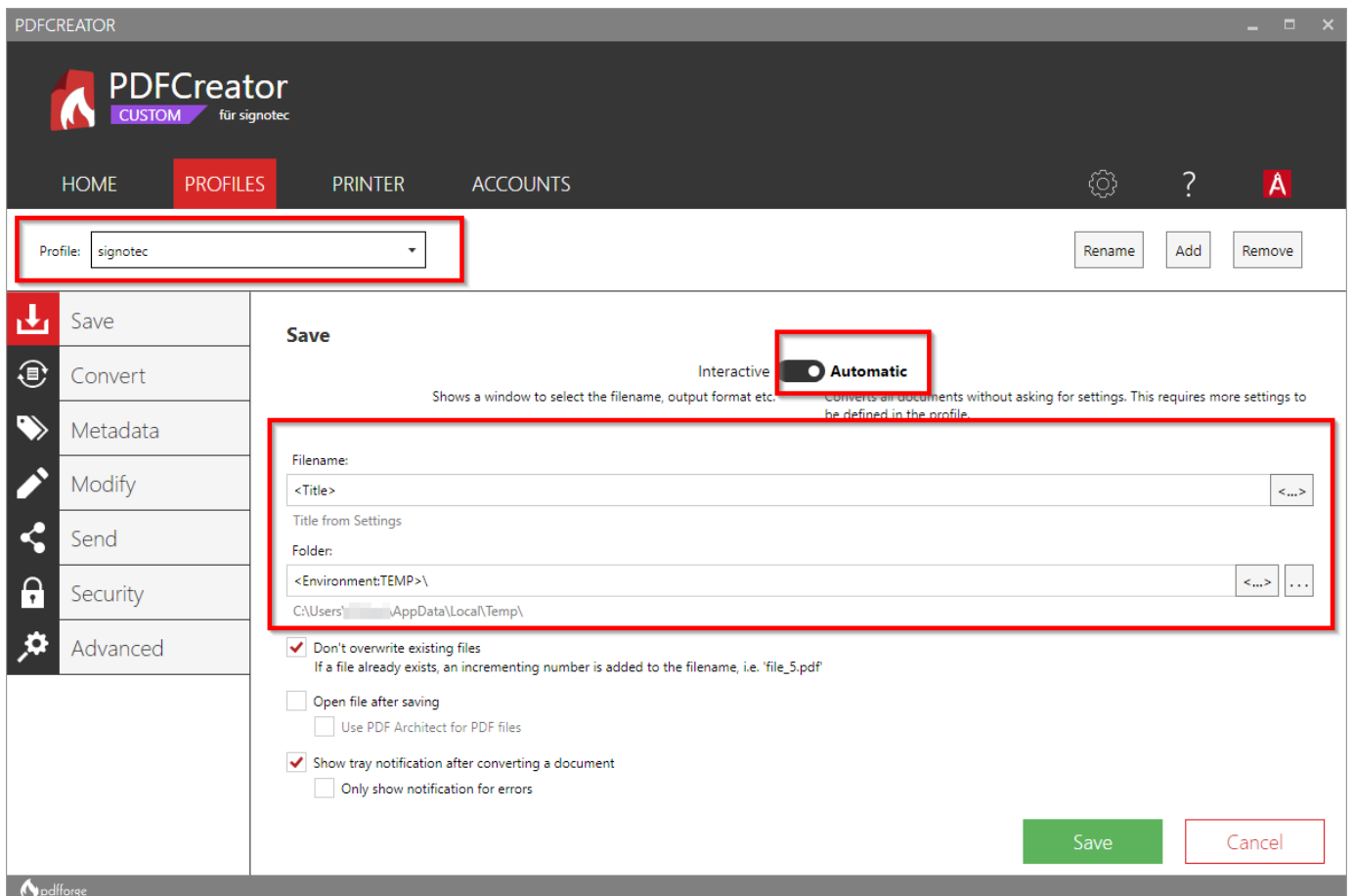
Inside the „**Profile**“ drop-down selection, choose „**signotec**“ in order to change the settings for it.

#### a. Save

Inside the tab „Save“ configure as follows:

- **„Automatic“ convert**
- **Filename: „<Title>“**
- **Folder „<Environment:TEMP>\“**

*A preview will be displayed. Filename and location can be customized.*



## b. Convert

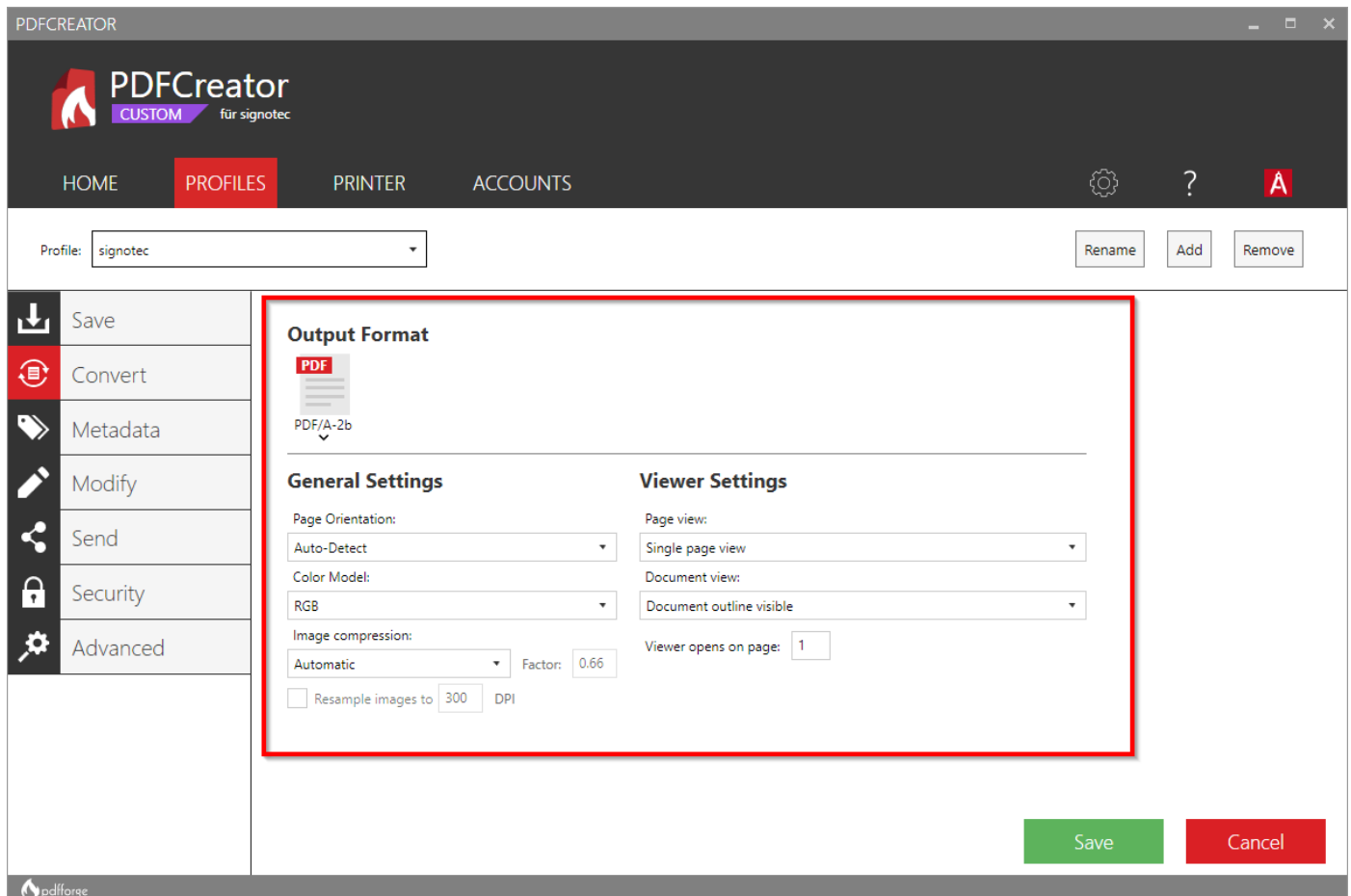
Within the tab „Convert“ configure as follows:

**Output Format: PDF/A-2b**

Page Orientation: Auto-Detect

Color Model: RGB

Image compression: Automatic



## c. Fortgeschritten: Skript ausführen

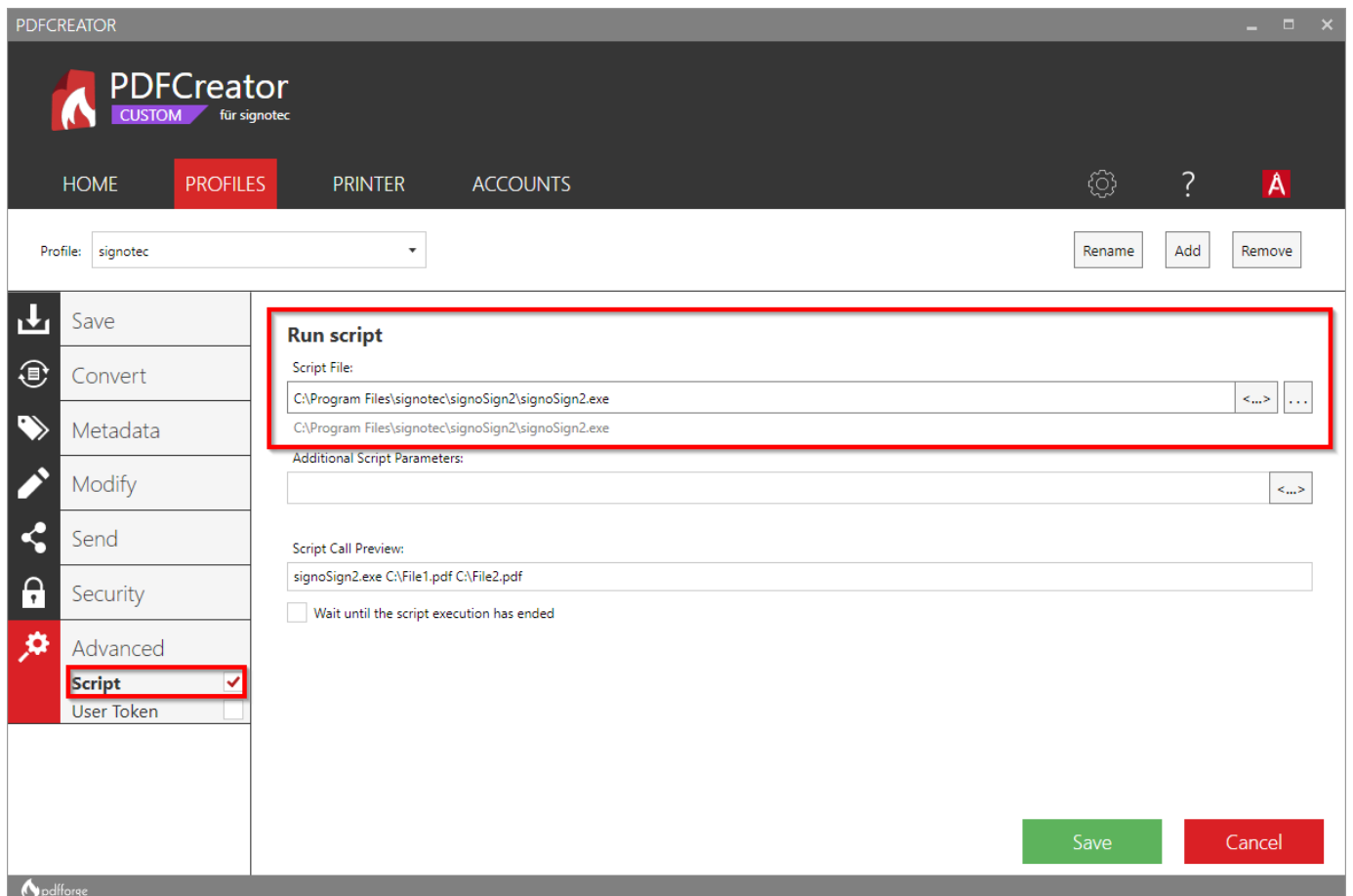
Within the tab „**Advanced**“ activate the function „**Script**“. As Script File choose the „**signoSign/2.exe**“.

Standard 32-Bit:

*C:\Program Files (x86)\signotec\signoSign2\signoSign2.exe*

Standard 64-Bit:

*C:\Program Files\signotec\signoSign2\signoSign2.exe*



## 4) Create printer

After you have created, configured and saved the profile, switch to the **tab „Printers“**.

Choose **„Add Printer“** at the bottom of the window.

As printer name you type **„signotec PDF Creator“** (Attention: Spelling!).

After you have created the printer, it will be displayed inside the list. Configure the signotec PDF Creator as **primary printer** and select the **profile „signotec“**.

Now the printer is configured and can be used from any application in order to convert the file into a PDF and start it with signoSign/2 automatically.

